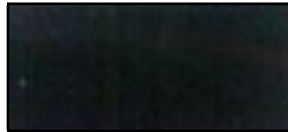
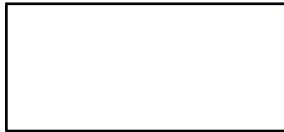


# Color Chart



Black (H101)



White (G101)



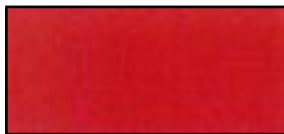
Gray (D116)



Dark Blue (C102)



Blue (C123)



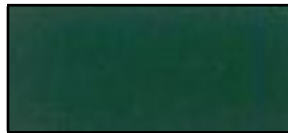
Red (A112)



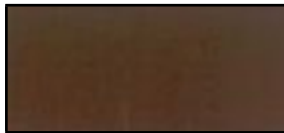
Yellow (E111)



Green (B122)



Green (B121)



Brown (J110)

All colors shown are reproduced from actual material samples and are printed as accurately as possible. Note that due to the variances in computers and printers this color chart should only be used as a guide. For an accurate representation of a specific color please request a color panel. If material color and finish are ***CRITICAL, REQUEST AN ACTUAL SAMPLE.***

Minimum order quantities may apply to available colors depending on stock.  
Color availability in some polymers may be limited.

Colors may vary according to resin type and substrate.

Revision 09/12

[www.protechpowder.com](http://www.protechpowder.com)